

POLAR PLUNGE



GREEK CHALLENGE





WHAT IS A POLAR PLUNGE?

The Special Olympics Polar Plunge is the coolest event of the winter! A Polar Plunge is a fundraising challenge made to an individual or group challenging them to dive into a cold body of water in order to raise money for Special Olympics. Each participant collects pledges from family, friends, and businesses in the hopes of raising lots of money to support over 10,500 Special Olympics athletes in Oklahoma.

The Plunge events occur in 14 different cities in Oklahoma from late January through the end of February. Each plunger raises a minimum of \$75 dollars to take a jump into the frozen water.

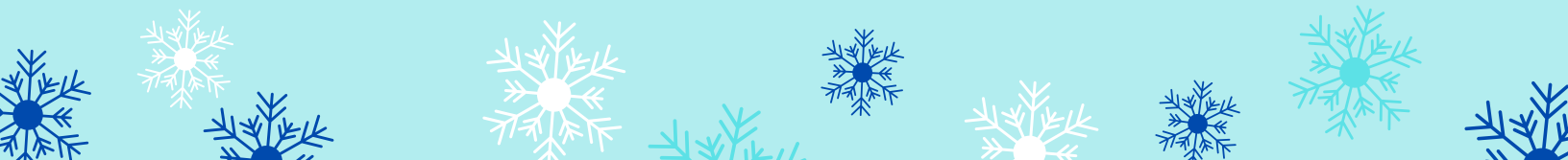


WHAT IS THE GREEK CHALLENGE?

Challenge - something that by its nature or character serves as a call to battle, contest, special effort, etc. Here's your running call to battle. Take the challenge and put your fraternity or sorority up against others taking part in the Polar Plunge. Battle it out for bragging rights!

The Polar Plunge Greek Challenge is a unique opportunity for you and your fellow members to laugh, shiver and bond as a group. There's nothing like entering icy waters together to take the Plunge. Plus, knowing that every dollar raised makes a difference in the lives of 10,500 Special Olympics athletes right here in Oklahoma, including opportunities to become leaders and even land jobs.

This is a unique team-building opportunity while helping a great cause at the same time. Challenge other campus fraternities and sororities to a friendly contest.



HOW TO GET STARTED

- 1- Register online
- 2- Create a team
- 3- Recruit members to join your team
- 4- Challenge other fraternities and sororities to plunge
- 5- Share your online fundraising page with family, friends and coworkers
- 6- Host fundraisers at your school
- 7- Earn great prizes based on the money you raise

THE MORE YOU RAISE, THE MORE YOU EARN

\$75

Exclusive 2025 Polar Plunge T-Shirt

\$250

Beanie, Socks, 40oz Tumbler, or Mug

\$500

Fanny Pack, Blanket, Towel, or Hooded Sweatshirt

\$1,000

Backpack, Wireless Ear Buds, or Jacket



MORE PRIZES!



The top fundraising fraternity or sorority will receive an award and have bragging rights on campus. Plungers are also eligible for the following awards:

- Best Costume
- Best Team Costume
- Top Fundraiser
- Youngest Plunger
- Oldest Plunger





TEAM CAPTAIN TIPS

Thank you for signing up for the Polar Plunge. Now it's time to get other fellow members to join you!

- Recruit others to join your team
- Set a fundraising goal for your team
- Provide team members with the fundraising resources
- Coach and motivate your team to success
- Host fundraisers
- Create friendly competitions amongst members
- Challenge other fraternities and sororities to see who can raise more pledges
- Stay connected with the team by:
 - Host a kick-off rally
 - E-mails and/or phone calls
 - Meetings
 - Consider developing a team theme with shirts and/or costumes
 - Have a team wrap-up party
- Distribute any fundraising incentives for your team
- **HAVE FUN TOGETHER!**

Commit to raising \$20,000 as an organization and we'll bring our pool to your location.



WWW.SOOK.ORG



[SPECIAL OLYMPICS OKLAHOMA](#)



[@SOOKLAHOMA](#)



[@SOOKLAHOMA](#)



[@SOOKLAHOMA](#)

For more information contact Hayley Winkle at hayley@sook.org or call 918-217-8632